

Strategic Plan 2026-2030

Nurturing their
God-Given
Potential



Nurturing our Growth



Our strategic plan arises from our Vision, which is informed by the understanding of our Mission and underpinned by our Values.

The plan is enacted through four strategic pillars, aligned with our College values of:

Courage
Hope
Service
Grace



Our Vision



To ensure a Christ-Centred learning community inspiring courageous learners, equipped to serve and thrive in a changing world.



Prince of Peace graduates are creative and resilient learners, equipped to co-create and serve in ever-changing global communities.



From Kindergarten to Year 12 and beyond

Our Mission

Our mission is to Nurture God-Given Potential in a Christ-Centred Environment.

Our Values

Our College culture is underpinned by values that shape how we speak, think and behave. We value:



Courage

to grow, learn, and develop our God-Given talents within a grace-filled environment.



Service

as a response to God's love, using our gifts to bless and uplift others.



Hope

in God's promises, guiding us as we explore our purpose and potential.



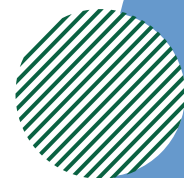
Grace

the undeserved love and mercy of God, given freely through Christ, which shapes a nurturing environment where students are valued, forgiven, and encouraged to grow in faith, learning & service.



Our Identity

Our identity reflects the heart of who we are at Prince of Peace Lutheran College: grounded in faith, committed to excellence, and focused on nurturing the whole child. It guides how we communicate, connect, and serve our community with clarity, consistency, and purpose. Our five critical elements (The 5 C's) are:





We are

Christ-Centred

- Embedding faith and Gospel values in teaching, leadership, and community life.
- Equipping students with spiritual literacy, ethical foundations, and service-oriented purpose.

Cutting Edge

- Embracing innovative pedagogy, digital fluency, and adaptive learning environments.
- Future-proofing education with creative, entrepreneurial, and interdisciplinary approaches.

Connected in Community

- Building a future with our communities that is underpinned by authentic relationships with students, families, churches, industry, and global partners.
- Celebrating diversity and collaboration through inclusive and supportive practices that encourage innovation and creativity.

Courage to Grow

- Encouraging every individual to take meaningful risks, learn from setbacks, and strive for excellence.
- Be innovative and forward thinking fostering a growth mindset of lifelong learning and spiritual growth.

Change Equipped

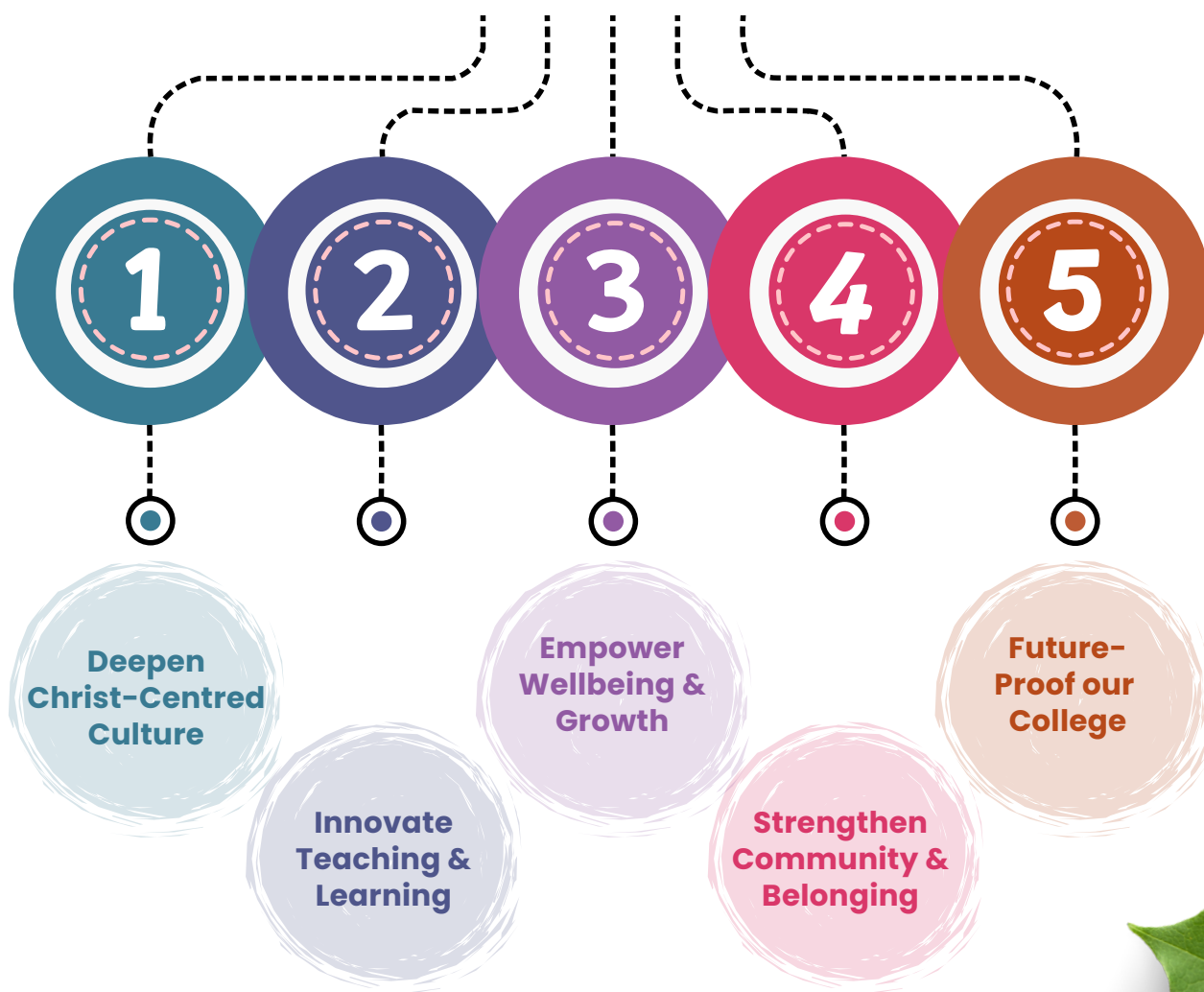
- Translating knowledge and ideas into opportunities that equip students and staff to lead and adapt to dynamic, complex futures.
- Developing resilience, adaptability, and systems thinking across all levels.



Our Strategic Objectives

Our strategic objectives provide clear direction for our growth, decision-making, and daily operations, ensuring we stay aligned with our mission and values. They help us focus our efforts on what matters most: delivering meaningful outcomes for our students, staff, and wider College community.

2026 – 2030





Strategic Objectives

1 Deepen Christ-Centred Culture

- 1 Renew and enhance spiritual formation programs and service-learning opportunities across all year levels.
- 2 Integrate Lutheran theology intentionally within leadership development and across the curriculum to shape a distinct faith identity.
- 3 Develop capabilities through targeted professional learning aligned to our five critical elements.

2 Innovate Teaching & Learning

- 1 Expand the use of inquiry-based, cross-disciplinary, and project-driven learning approaches to foster creativity and critical thinking.
- 2 Inspiring and dynamic, future-focused learning experiences.
- 3 Equip graduates to be intellectually agile, and globally responsive.

3 Empower Wellbeing & Growth

- 1 Implement a College wellbeing program that integrates evidence-based positive education practices with Gospel values to cultivate a supportive environment fostering holistic growth, resilience, and purpose within the College community.
- 2 Design and deliver diverse learning and leadership pathways that support success and an opportunity to flourish.
- 3 Create learning environments that inspire creativity, collaboration, and belonging.



Strategic Objectives

4 Strengthen Community & Belonging

- 1 Renew and enhance spiritual formation programs and service-learning opportunities across all year levels.
- 2 Establish community hubs, parent education initiatives, and intercultural programs that build strong, inclusive connections.
- 3 Strengthen alumni, parent, church, and wider community relationships to enrich the learning ecosystem.

5 Future-Proof our College

- 1 Develop and implement a College Master Plan that ensures facilities are sustainable, flexible, and aligned with our mission and values.
- 2 Invest in campus enhancements including green spaces, cutting-edge digital infrastructure, and creative learning studios.
- 3 Use evidence-informed practice and data to drive growth and innovation.



Our Strategic Pillars



Our four strategic pillars—PoP Pathways, PoP Active, PoP Enrich and PoP Connect—provide a balanced and holistic framework that supports every student’s growth and success. Together, they guide our priorities, ensuring that learning is rigorous, opportunities are diverse, and every student feels a strong sense of belonging.



PoP Pathways

Preparing students for purpose-filled futures



PoP Active

Activating Physical, Sporting, and Holistic growth



PoP Enrich

Investing in people and places that enrich learning



PoP Connect

Creating meaningful connections within and beyond the College





PoP PATHWAYS

Redesigning learning pathways

to support academic, vocational, and enterprise aspirations, including deepening learning with our **PoPX program for gifted and talented students.**

Personalising learning

through adaptive technologies and mentoring.

Expanding partnerships

with universities, industry, and service organisations.

growth.
mindset
academic
vocational
learning
tertiary
powerful
pathways
partnerships
personalised





POP ACTIVE

Fostering student engagement

in physical activities, outdoor education (camps) and sports through active engagement and service.

Strengthening partnerships

with local sporting clubs to leverage community building opportunities.

Cultivate servant leadership

ethical citizenship, and enact gospel-centred wellbeing frameworks.

soccer
amwork
tive
outdoor
physical
basketball
education
management
netba'





POP ENRICH

Attract, develop and retain

passionate, future-focused educators and leaders.

Foster a culture of enrichment

opportunities that extend beyond academics, into extracurricular activities that foster talents and creativity.

Enhance campus facilities

to support flexible, sustainable, and inspiring environments.

engagement
educators
connection
inspiring
future-focused
enrich
culture
sustainable
passionate



POP CONNECT

Deepen community engagement

through local and global partnerships.

Integrate student voice

and agency in decision-making.

Innovate in communication

and collaborative platforms for families and staff.



collaboration
engagement
partnerships
parent
community
school
student
church
voice
local
agency

Review & Evaluate



- Annual Impact Reports aligned to PACE and our five critical elements.
- Ongoing consultation with stakeholders through surveys, forums, and advisory groups.
- Strategic review mid-cycle in 2028 to recalibrate priorities as required.





At all times, Christ-Centred

Scripture underscores the responsibility we have to explore our talents and use our unique gifts in service to others, promoting a culture of stewardship and communal support.

“As each has received a gift, use it to serve one another, as good stewards of God’s varied grace.”
(1 Peter 4:10)



College Correspondence:

20 Rogers Parade West

Everton Park QLD 4053

P +61 7 3872 5700

E school@princeofpeace.qld.edu.au

W princeofpeace.qld.edu.au

PRINCE
of PEACE
LUTHERAN
COLLEGE

Junior Campus

Kindy - Year 6

20 Rogers Parade West

Everton Park QLD 4053

P +61 7 3872 5700

Senior Campus

Years 7 - 12

25 Henderson Road

Everton Hills QLD 4053

P +61 7 3872 5600

ABN 55 716 243 279

VERSION 2025V01

