

2021

# Uniform Handbook

nurturing God-given potential

## **Contents**

Message from the Head of College	3
Uniform shop hours	3
Uniform guidelines	4
Grooming and presentation	5
Changes to the Junior Campus Uniform	6

### **Junior Campus Uniforms**

#### Junior School Uniform for Prep—Year 6

Prep uniform requirements	7
Uniform for Girls Years 1—6	8
Uniform for Boys Years 1—6	10

### **Senior Campus Uniforms**

#### Middle School Uniform for Years 7—9

Uniform for Girls Years 7—9	12
Uniform for Boys Years 7—9	14

#### Senior School Uniform for Years 10—12

Uniform for Girls Years 10—12	16
Uniform for Boys Years 10—12	18

### **General Information**

Additional sale items	20
Prices and payment options	21
Exchanges and refunds	21
End of year purchases	21
Care of uniforms	22
Second hand uniforms	23
Location	24



Dear Parent/ Caregiver,

At Prince of Peace, we are committed to providing the best learning environment for your child. We believe that the College uniform assists your child in identifying with, and developing a sense of pride and commitment, to the College.

We ask that you support us in ensuring the uniform is worn properly, neatly and in full each day.

Yours in Christ,

A handwritten signature in black ink, appearing to read 'Simon'.

Simon Hughes  
**Head of College**

## UNIFORM SHOP HOURS

All College uniforms (Prep—Year 12) must be purchased at either our Uniform Shop on the Junior Campus at set times or at The School Locker in North Lakes.

### **Junior Campus Shop Hours (during school terms)**

Tuesday: 7:30am – 9:30am

Thursday: 2.00pm – 4.00pm

The shop is located on the Junior Campus:  
20 Rogers Parade West  
Everton Park QLD 4053  
(In the Green Room, next to the kitchen)

### **The School Locker**

The School Locker is located at 4-6 Burke Crescent, North Lakes.

Additional opening hours during peak periods, along with information regarding our online appointment booking system, will be displayed on the website - [www.princeofpeace.qld.edu.au](http://www.princeofpeace.qld.edu.au).

All students at Prince of Peace Lutheran College are expected to comply with all aspects of the College uniform (as set out for their year level) from the time of leaving home in the morning until they return at the end of the day. This includes while in transit and at shopping centres.

Junior Campus students will be advised at the beginning of the year which uniform to wear on which day. Senior Campus students will be advised at the start of each term when they receive their new timetable.

All uniform items, except shoes, stockings/tights and Junior School house shirts (see below) are to be bought from the College Uniform Shop.

### **Hats**

Students are to wear a College hat at all times when travelling to and from College, and when outside a building. Students not wearing hats will not be permitted to play outside.

### **Shoes**

Students are to wear College-approved shoes at all times.

### **School bags**

Students are encouraged to use the College back pack or a similar back pack in navy blue.

### **Acceptable shoes for Y7–12 Design Technology and Food Technology**

All students in Years 7–12 who study Design Technology or Food Technology will need shoes with a leather upper for these lessons. Mesh and fabric sports shoes do not provide adequate protection in the workshop. Students must wear a full leather-upper formal or sports shoe to protect feet from injury. If the student's sports shoes have a mesh upper he or she will need to wear formal shoes to these lessons.

### **Coloured House Shirts**

A coloured polo shirt in the student's house colour is required for inter-house sports competitions – Bradman (bottle green), Fraser (navy blue), Jackson (red) and Laver (yellow).

- Junior Campus students can wear a plain polo shirt (purchased elsewhere) or the official House Polo Shirt with logo from the Uniform Shop.
- Senior Campus students are required to purchase and wear the official house shirt with the logo on it from the Uniform Shop.

## Grooming and presentation

---

### **Hair**

Students are to have conservative hair styles and be neatly groomed at all times. Hair is to be of a natural colour with no obvious colour contrasts. Hair should be styled so the College hat can be worn correctly.

#### Girls

Girls with shoulder-length or longer hair are to have their hair tied up while in uniform. Hair is to be secured with a band or head band of similar colour to the student's hair. A simple ribbon of white, navy or royal blue (Years P-6) or navy blue (Years 7-12) may also be worn.

#### Boys

Boys are to have hair no shorter than a No. 3 blade and no longer than the collar. Hair longer than shoulder length needs to be tied up while in uniform. Undercuts, long fringes, rat's tails and so on are not permitted.

Boys are to be clean shaven.

### **Jewellery**

A simple cross or other Christian religious symbol on a fine chain is the only item of jewellery to be worn with the College uniform. Rings are not permitted.

Female students with pierced ears may wear one small pair of plain gold or silver studs (no gemstones).

Piercings, other than of one set of holes in the ears suitable for wearing plain stud earrings (female students only), are not permitted.

Students may wear a watch.

### **Make up and cosmetics**

The wearing of make-up, cosmetics and nail polish is not permitted.

### **Tattoos**

Tattoos are not permitted.



## Changes to the Junior Campus Uniform

### New Formal Uniform

In 2019, the College introduced new navy blue striped uniform. From 2021, only the new navy striped uniform will be permitted. Second hand royal blue uniforms can not be worn at the College.



## Prep Uniform Requirements

All Prep students wear the unisex sports uniform every day.

### Sports Uniform for both boys and girls

#### Shirt

Unisex, navy blue with white and sky blue stripes polo shirt

#### Shorts or Skorts (for girls)

Navy blue

#### Shoes

White joggers or sandals only  
(with minimal or no extra colours).  
We recommend velcro fastenings.

#### Socks

White ankle socks with navy and sky  
blue stripe

#### Track Jacket

Navy microfibre

#### Track Pants

Navy microfiber

#### Hat

Navy College bucket hat with white  
embroidering and house colour



front



### **JUNIOR CAMPUS FORMAL UNIFORM OPTION A (DRESS)**

All Year 1—6 students wear their formal uniform 3 days a week and their sports uniform 2 days a week.

#### **Dress**

Old: Blue, white and brown checked dress with royal blue collar

New: Navy stripes

#### **Shoes**

Black, leather school shoes with laces or velcro

NB: Mary Jane shoes are permitted.

#### **Socks**

White ankle socks with navy and sky blue stripes

#### **Tights**

70 denier navy stockings or ribbed tights

NB: Track pants can not be worn under the dress.

#### **Pullover**

Unisex navy College pullover

#### **Hat**

Navy blue broad brim hat with embroidered logo

#### **Hair accessories**

Navy accessories can be worn with either formal uniform. House coloured accessories are permitted when wearing the house shirt.

NB: Accessories can be purchased through the uniform shop or at local shopping centres.





## JUNIOR CAMPUS FORMAL UNIFORM OPTION B (UNISEX)

All Year 1—6 students wear their formal uniform 3 days a week and their sports uniform 2 days a week.

### Shirt

Old: Blue, white and brown check shirt with royal blue collar (untucked)

New: Navy striped shirt with collar (untucked)

### Shorts

Old: Royal blue shorts

New: Grey shorts

### Long Pants

New: Grey long pants

NB: Track pants can not be worn with the formal shirt.

### Shoes

Black, leather school shoes with laces or velcro

NB: Mary Jane shoes are permitted.

### Socks

White ankle socks with navy and sky blue stripes

### Pullover

Unisex navy College pullover

NB: The track jacket can not be worn with the formal uniform

### Hat

Navy blue broad brim hat with embroidered logo

### Hair accessories

See page 8



### Shirt

Unisex, navy blue with white and sky blue stripes

### Shorts or Skorts (for girls)

Navy blue

### Shoes

White joggers only (with minimal or no extra colours)

Lace ups or velcro.

### Socks

White ankle socks with navy and sky blue stripes

### Track Jacket

Navy microfibre

### Track Pants

Navy microfiber

### Hat

Option 1—Navy blue broad brim hat with embroidered white logo (Formal Hat)

Option 2—Navy College bucket hat with white embroidering and house colour

### Sports House Shirts

Junior Campus students can wear a plain polo shirt (purchased from a department store) or the official House Polo Shirt with logo, available from the Uniform Shop or The School Locker.



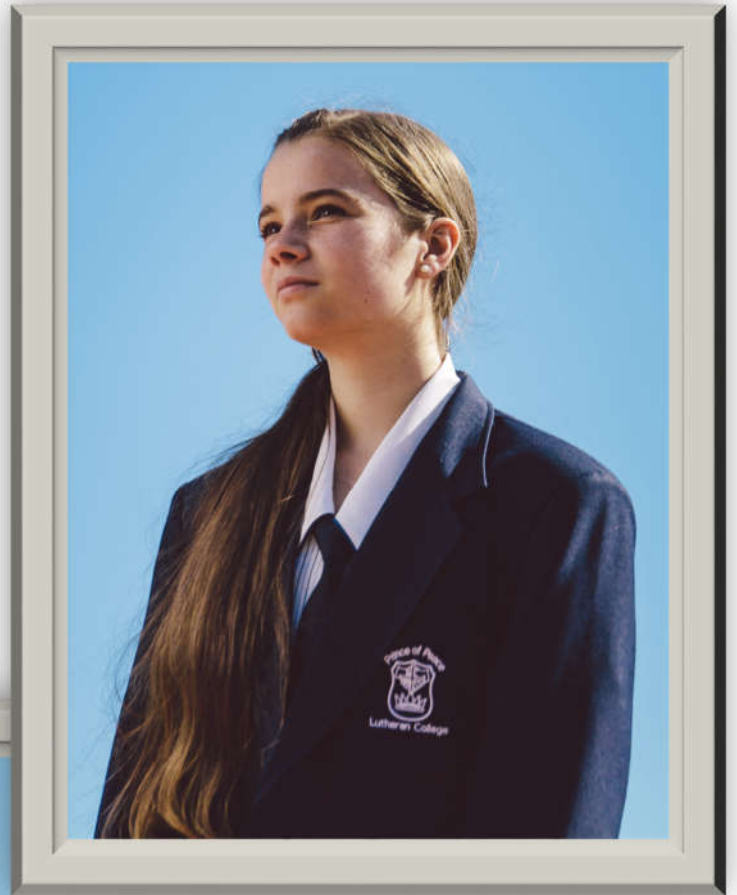
or



Front



# Senior Campus Uniform



### **MIDDLE SCHOOL UNIFORM**

The formal uniform is worn up to four days a week depending upon the student's timetable. Likewise, the sports uniform is worn in line with timetable requirements.

#### **Formal Uniform for Girls**

Girls have the choice of wearing the dress or the blouse and skirt.

##### **Dress**

White with blue pin stripe (knee length)

##### **Skirt**

Navy blue long (knee length or just below)

##### **Pants**

Navy long pants

##### **Blouse**

White with blue pin stripes (untucked)

##### **Tie**

Navy with logo worn every day with either the blouse or the dress

##### **Shoes**

Black leather lace up school shoes

NB: Jogger style leather shoes or Mary Jane style shoes are not permitted.

##### **Socks**

White ankle socks with navy and sky blue stripes

##### **Tights**

Navy opaque tights (70 denier)

##### **Pullover**

Unisex, royal blue pullover with white and blue stripes on the band

##### **Hat**

Navy blue broad brim hat with embroidered logo

## Sports Uniform for Girls Years 7-9

### Shirt

Unisex, navy blue with white and sky blue stripes

### Shorts or Skorts

Navy blue

### Shoes

Predominantly white joggers or sneakers, preferably with a leather upper (for Design Technology and Food Technology subjects).

### Socks

White ankle socks with navy and sky blue stripes

### Track Jacket

Unisex, navy blue, white and sky blue  
NB: To be worn with sports uniform only.

### Track Pants

Unisex, navy blue with white and sky blue

### Hat

Option 1—Navy blue broad brim hat with embroidered white logo (Formal Hat)

Option 2—Navy College bucket hat with white embroidering and house colour

### Sports House Shirts

A coloured polo shirt in the student's house colour is required for inter-house sports competitions. House Polo Shirts are available in the Uniform Shop.

The house shirt with the embroidered logo is compulsory on the Senior Campus.



or



Front



### **MIDDLE SCHOOL UNIFORM**

The formal uniform is worn up to four days a week depending upon the student's timetable. Likewise, the sports uniform is worn in line with timetable requirements.

#### **Formal Uniform for Boys**

##### **Shirt**

Blue, short or long sleeved, with College logo (tucked in)

##### **Shorts**

Grey, knee length—to be worn with a black belt

##### **Pants**

Grey, long—to be worn with a black belt and grey low rise socks

##### **Tie**

Navy with logo (to be worn on formal occasions and as directed)

##### **Shoes**

Black leather lace up school shoes

NB: Jogger style leather shoes are not permitted.

##### **Socks**

Knee high, grey with blue and white stripes to be worn with shorts

Ankle length to be worn with pants

##### **Pullover**

Unisex, royal blue pullover with white and blue stripes on the band

NB: To be worn with formal uniform only.

##### **Hat**

Navy blue broad brim hat with embroidered logo



## Sports Uniform for Boys

### Shirt

Unisex, navy blue with white and sky blue stripes

### Shorts

Unisex, navy blue

### Shoes

Predominantly white joggers or sneakers, preferably with a leather upper (for Design Technology and Food Technology subjects).

### Socks

White ankle socks with navy and sky blue stripes

### Track Jacket

Unisex, navy blue, white and sky blue  
NB: To be worn with sports uniform only.

### Track Pants

Unisex, navy blue with white and sky blue

Option 1—Navy blue broad brim hat with embroidered white logo (Formal Hat)

Option 2—Navy College bucket hat with white embroidering and house colour

## Sports House Shirts

A coloured polo shirt in the student's house colour is required for inter-house sports competitions. House Polo Shirts are available in the Uniform Shop. The house shirt with the logo is compulsory on the Senior Campus.



or



### **SENIOR SCHOOL UNIFORM**

The formal uniform is worn up to four days a week depending upon the student's timetable. Likewise, the sports uniform is worn in line with timetable requirements.

#### **Formal Uniform for Girls**

Girls have the choice of wearing the dress or the blouse and skirt.

##### **Blazer**

Unisex, navy blazer to be worn to on formal occasions and as directed

##### **Skirt**

Navy blue long (knee length or just below)

##### **Pants**

Navy long pants

##### **Blouse**

White with blue pin stripes (untucked)

##### **Tie**

Navy with stipes and logo worn every day with the blouse or the dress

##### **Shoes**

Black leather lace up school shoes. No jogger style leather shoes.

##### **Socks**

White ankle socks with navy and sky blue stripes

##### **Tights**

Navy opaque tights (70 denier)

##### **Pullover**

Unisex royal blue pullover with white and blue stripes on the band

##### **Hat**

Straw College hat with band

## Sports Uniform for Girls Years 10-12

---

### Sports Uniform for Girls

#### Shirt

Unisex, navy blue with white and sky blue stripes

#### Shorts

Unisex, navy blue

#### Shoes

Predominantly white joggers or sneakers, preferably with a leather upper (for Design Technology and Food Technology subjects).

#### Socks

White ankle socks with navy and sky blue stripes

#### Track Jacket

Unisex, navy blue, white and sky blue  
NB: To be worn with sports uniform only.

#### Track Pants

Unisex, navy blue with white and sky blue

#### Hat

Option 1—Navy blue broad brim hat  
with embroidered white logo  
(Formal Hat)

Option 2—Navy College bucket hat  
with white embroidering and house  
colour

### Sports House Shirts

A coloured polo shirt in the student's house colour is required for inter-house sports competitions. House Polo Shirts are available in the Uniform Shop. The house shirt with the logo is compulsory on the Senior Campus.

### **SENIOR SCHOOL UNIFORM**

The formal uniform is worn up to four days a week depending upon the student's timetable. Likewise, the sports uniform is worn in line with timetable requirements.

#### **Formal Uniform for Boys**

##### **Blazer**

Unisex, navy blazer to be worn to on formal occasions and as directed

##### **Shirt**

Blue, short or long sleeved, with College logo (tucked in)

##### **Shorts**

Grey, knee length—to be worn with a black belt

##### **Pants**

Grey, long—to be worn with a black belt

##### **Tie**

Navy with stripes and logo (to be worn on formal occasions and as directed)

##### **Shoes**

Black leather lace up school shoes

NB: Jogger style leather shoes are not permitted.

##### **Socks**

Knee high, grey with blue and white stripes to be worn with shorts

Ankle length to be worn with pants

##### **Pullover**

Unisex, royal blue pullover with white and blue stripes on the band

NB: To be worn with formal uniform only.

##### **Hat**

Felt College hat with band

## Sports Uniform for Boys Years 10-12

---

### Sports Uniform for Boys

#### Shirt

Unisex, navy blue with white and sky blue stripes

#### Shorts

Unisex, navy blue

#### Shoes

Predominantly white joggers or sneakers, preferably with a leather upper (for Design Technology and Food Technology subjects).

#### Socks

White ankle socks with navy and sky blue stripes

#### Track Jacket

Unisex, navy blue, white and sky blue  
NB: To be worn with sports uniform only.

#### Track Pants

Unisex, navy blue with white and sky blue

#### Hat

Option 1—Navy blue broad brim hat  
with embroidered white logo  
(Formal Hat)

Option 2—Navy College bucket hat  
with white embroidering and house  
colour

### Sports House Shirts

A coloured polo shirt in the student's house colour is required for inter-house sports competitions. House Polo Shirts are available in the Uniform Shop. The house shirt with the logo is compulsory on the Senior Campus.

With the exception of shoes, stockings/tights and Junior School House Shirts, all uniform items are to be purchased at the College Uniform Shop.

**Additional, non-compulsory items for sale include:**

- Prince of Peace back packs (recommended for purchase and use)  
NB—while not compulsory, approx. 98% of our students use this bag.
- Fridge-to-Go lunch boxes
- Football socks
- umbrellas
- lanyards
- Prince of Peace swim caps
- ribbons
- spare buttons\*
- drawstring library bags
- replacement homework satchels (issued in Prep)

**\*Spare buttons:**

Junior shirt buttons and Junior dress buttons are available separately. All other uniform items should have spare buttons included on the garment. Please check

- side seams for the Junior sport shirts,
- bottom of the placket for Middle School formal shirts,
- centre front lining for the Middle School blouse,
- bottom of the pockets (outside seam) for the Middle School skirts and dresses, and
- near the inside chest pocket for the Senior blazers.

**Label all items**

Please ensure all uniform items, bags, lunchboxes and any other items brought to the College are clearly named. Please check throughout the year that labels have not worn off. Lost property is available at both campus receptions.



## General Information

---

### Prices and payment options

Current prices for all uniforms are available on The School Locker's website.

The Uniform Shop accepts the following forms of payment:

- cash
- EFTPOS – (min \$10 spend)
- credit card (Visa and Mastercard only)

### Exchanges and refunds

Exchanges may be made on new uniform items provided they are:

- returned within four weeks of purchase,
- returned in the original packaging with tags attached, and
- accompanied by a register docket as proof of purchase.

Please choose carefully as we do not give refunds, but gladly exchange items returned in 'as new' condition. Items for return should be sent in a plastic bag with your child's name, class and size required.

Items considered faulty will be returned to the manufacturer for a decision before a credit can be issued.

### End-of-year purchases

When purchasing at the end of the year for uniforms that are being worn in the new year, please consider putting the uniforms aside unwashed and unlabeled (with tags attached) until the week before school commences. If on your final check you find the items are no longer a suitable fit, they can be exchanged upon presentation of the item in an 'as new' condition and your receipt (see above).

If you are satisfied with the fit, then uniforms should be labeled before wear on the first day.

To maintain optimum appearance and durability, please follow the care instructions on uniforms for washing.

### **Socks**

Socks should be cleaned with a colour-safe soaker to preserve the stripe colour.

### **Junior School hats (Years 1 to 6)**

- Do not dry clean
- Hand wash only
- Use cold water only
- Drip-dry only
- Do not use washing powders that contain built in bleach
- Do not dry the hat in the direct sunlight
- Do not store your hat in the car

If your child perspires heavily, you will notice a white substance form on the bottom of the crown and where the brim meets the crown. This substance is a build up of salt from the perspiration and if left unattended, will fade the fabric. In the event of this occurring, you can rinse the hat out in cold water on a weekly/fortnightly basis to remove the salt build up from the fabric.

### **Middle and Senior School hats (Years 7 to 12)**

#### Polypropylene hats

- Sponge gently with cold water & use a mild soap (Lux or Sunlight). Do not use abrasive chemical products to remove spots
- Scrub soiled area with a small soft brush
- Rinse in cold water & shake dry
- Do not machine wash, tumble dry or place in dishwasher

## Care of Uniforms

---

### Felt/wool hats

- Do not dry clean
- Always brush your hat anti-clockwise
- When your hat is not being worn, do not rest the hat on the brim. Stand it on the crown
- Should your hat become wet, allow it to dry naturally. Do not put your hat away when it is moist with perspiration or wet
- Do not allow your hat to dry in the direct sunlight (or in the car)
- If after brushing, a soiled spot remains, slightly dampen a clean cloth with cleaning fluid or thinners and rub lightly
- The hat can be treated with a silicon waterproofing spray

### **Second hand uniforms**

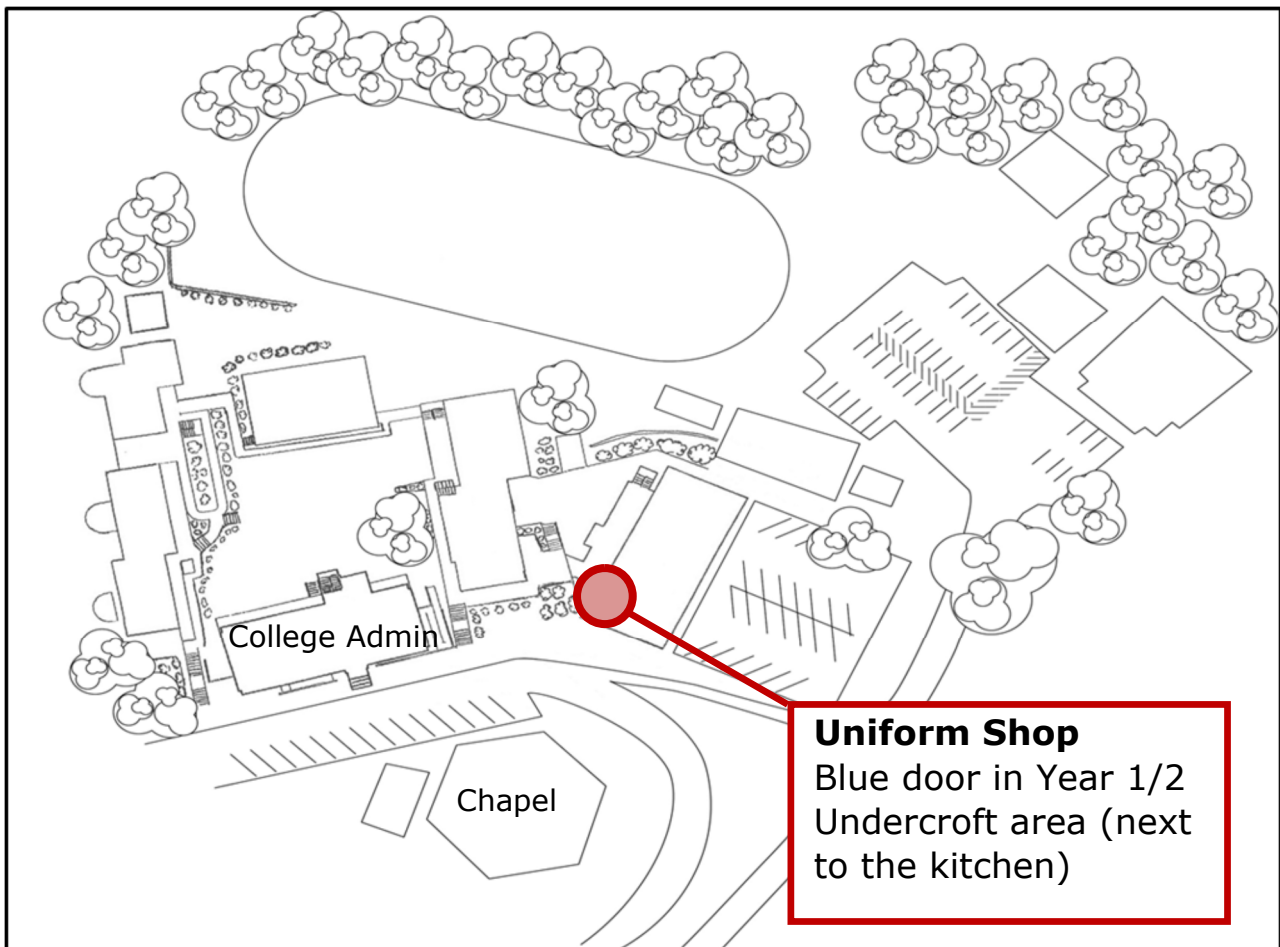
A range of second hand uniforms are available for purchase at selected times throughout the year. Please refer to the website for upcoming dates.

Private sales of second hand uniforms and sporting and musical items can be made via the POP Second Hand Buy and Sell Facebook page.

## Uniform Shop location

All College Uniforms (Prep—Year 12) are to be purchased from the Uniform Shop located on the Junior Campus:

20 Rogers Parade West  
Everton Park QLD 4053  
(In the Year 1/2 undercroft)  
P: (07) 3872 5720  
E: [uniformshop@princeofpeace.qld.edu.au](mailto:uniformshop@princeofpeace.qld.edu.au)



## The School Locker—North Lakes

4-6 Burke Crescent  
North Lakes  
p: 3490 1400