



# Nurturing Our Future

PRINCE  
*of* PEACE  
LUTHERAN  
COLLEGE

**Strategic Directions  
2023-2025**

**Therefore encourage**  
one another and build  
one another up, just as  
you are doing.

Thessalonians 1:5-11





# As Prince of Peace Lutheran College (POPLC) enters a new era, we are excited to present our strategic directions for 2023-2025.

**This plan reflects our commitment to delivering an exceptional Christ-centred education to our community, while adapting to the changing educational landscape and global challenges.**



The global pandemic, shifting government policies, and rapid growth in our local community have presented new challenges for POPLC. To ensure we continue to provide the highest quality education, we have developed our strategic direction to address these challenges head on.

At POPLC, we believe that our community is an essential partner in shaping the College's future. We conducted extensive feedback and planning sessions to ensure that these strategic directions reflect the wants and needs of our community.

Our strategic directions for 2023 – 2025 focus on three key objectives:

- Identity and Community Connection
- Future-Focused Education
- Spaces and Resources for a Sustainable Future

Within this document you will see a summary of the key elements of each objective.

We invite all members of the POPLC community to join us in our mission to provide an exceptional Christ-centred education that prepares our students for a bright future.

Together, we can make POPLC the co-educational Christian school of choice on Brisbane's northside.

**Simon Hughes**  
**Head of College**

**Sharryn Cook**  
**Council Chair**

# Remaining focused on our vision

In executing our strategic plan we remain committed to the elements which underpin our Vision, our reason for being (our Mission) and our guiding behaviours (our Values).

## Our Vision

Prince of Peace graduates are empathetic, creative and resilient learners who demonstrate the adaptability and initiative needed as global citizens to serve their communities in ever-changing environments.

## Our Mission

Our mission is to 'Nurture God-given potential in a Christ-centred environment through contemporary educational practices'.

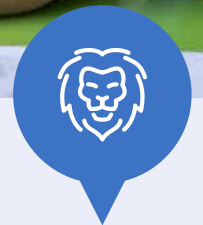
## Our Values

Our values help shape our culture. Our aim is for all of our community to live our values with intention (words, thoughts and behaviours).



### Hope

Through God we gain peace and will be positive about our future



### Courage

We will have the strength to persevere



# Three Strategic Objectives

Throughout our consultation and planning phase we were able to group our strategic requirements for the College into three core objectives.

We believe that by having a narrowed and sharper focus on just three objectives we will make good progress in the time we have available to position the College in readiness for sustainable growth. We are also confident that by focusing on our community and students' needs as priorities, we will see POPLC be a thriving and dynamic learning environment.



## Service

By serving others we will help make our world a better place



## Grace

We practice acceptance for ourselves and respect others



**Identity**  
and Communication  
Connection



**Future**  
Focused Education



**Spaces**  
and Resources  
for a Sustainable  
Future

PRINCE  
of PEACE  
LUTHERAN  
COLLEGE

PRINCE  
of PEACE  
LUTHERAN  
COLLEGE

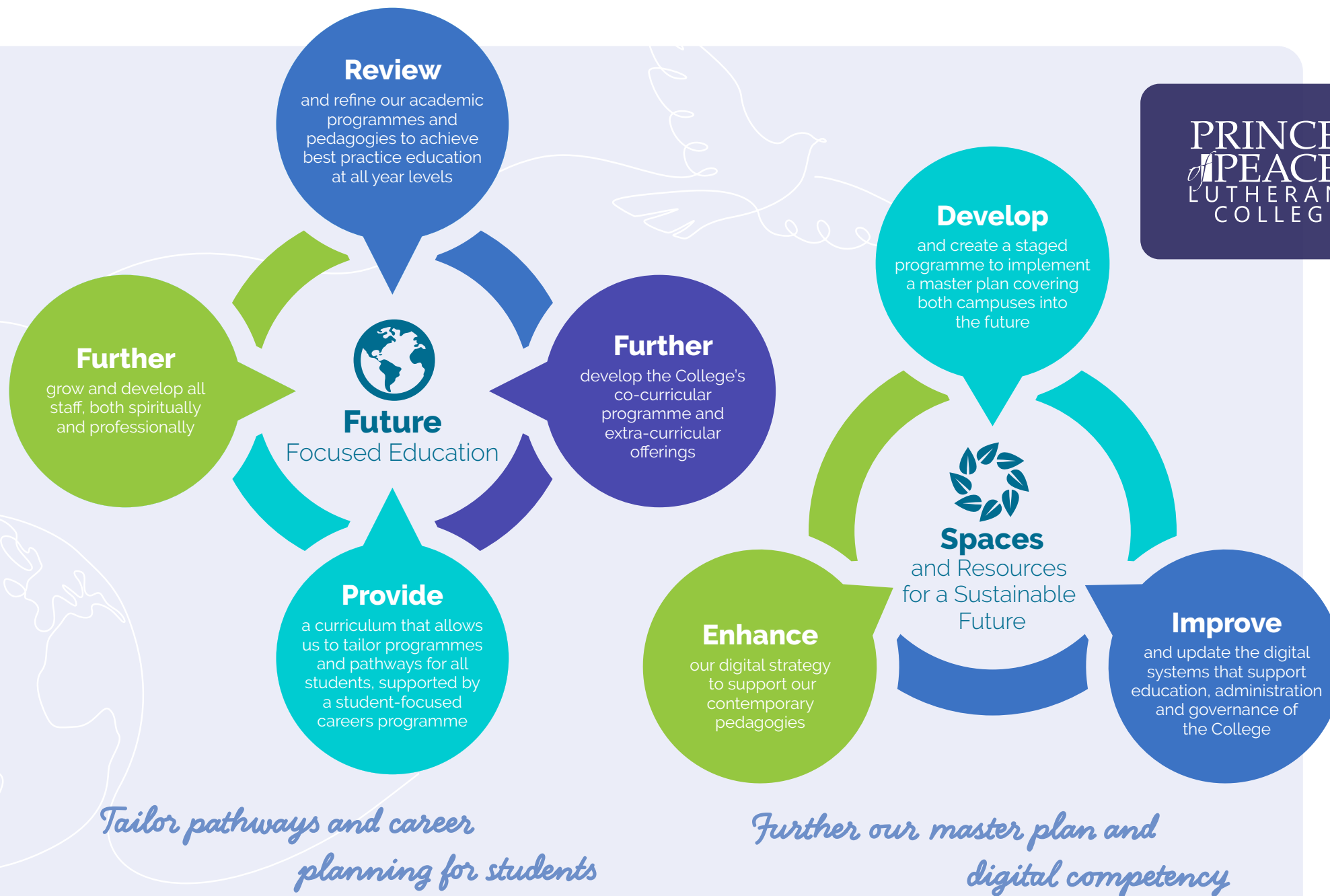
## Within each of our three objectives

we have outlined key actions which will guide our implementation. Each of these actions will have further sub-elements and KPIs which will be measured in each year (2023, 2024 and 2025).



*Embodying our values will  
shape our culture*







**PRINCE  
of PEACE**  
LUTHERAN  
COLLEGE

### College Correspondance:

📍 20 Rogers Parade West Everton Park QLD 4053

☎ +61 7 3872 5700

✉ school@princeofpeace.qld.edu.au

💻 [www.princeofpeace.qld.edu.au](http://www.princeofpeace.qld.edu.au)

ABN 55 716 243 279

### Junior Campus Kindy - Year 6

📍 20 Rogers Parade West Everton Park QLD 4053

### Middle & Senior Campus Year 7 - Year 12

📍 25 Henderson Road Everton Hills QLD 4053



SCAN THE  
QR CODE TO  
SEE MORE ON  
OUR STRATEGIC  
DIRECTIONS ON  
OUR WEBSITE